



1840 North Meridian Indianapolis, IN

New Development- Medical Office - Office - Redevelopment

For Lease or Purchase: 10,000-40,000 SQ FT

PROPERTY HIGHLIGHTS



- TOTAL SQUARE FEET: 40,000 SQ FT
- VACANCY: 10,000-40,000 SQ FT
- TENANTS: 100% VACANT - EXISTING BUILDING
- USE: TBD, REDEVELOPMENT OPTIONS, OFFICE USE, MEDICAL USE, LAND
- BUILDING TYPE: OFFICE-MEDICAL
- BUILDING SIGNAGE: AVAILABLE



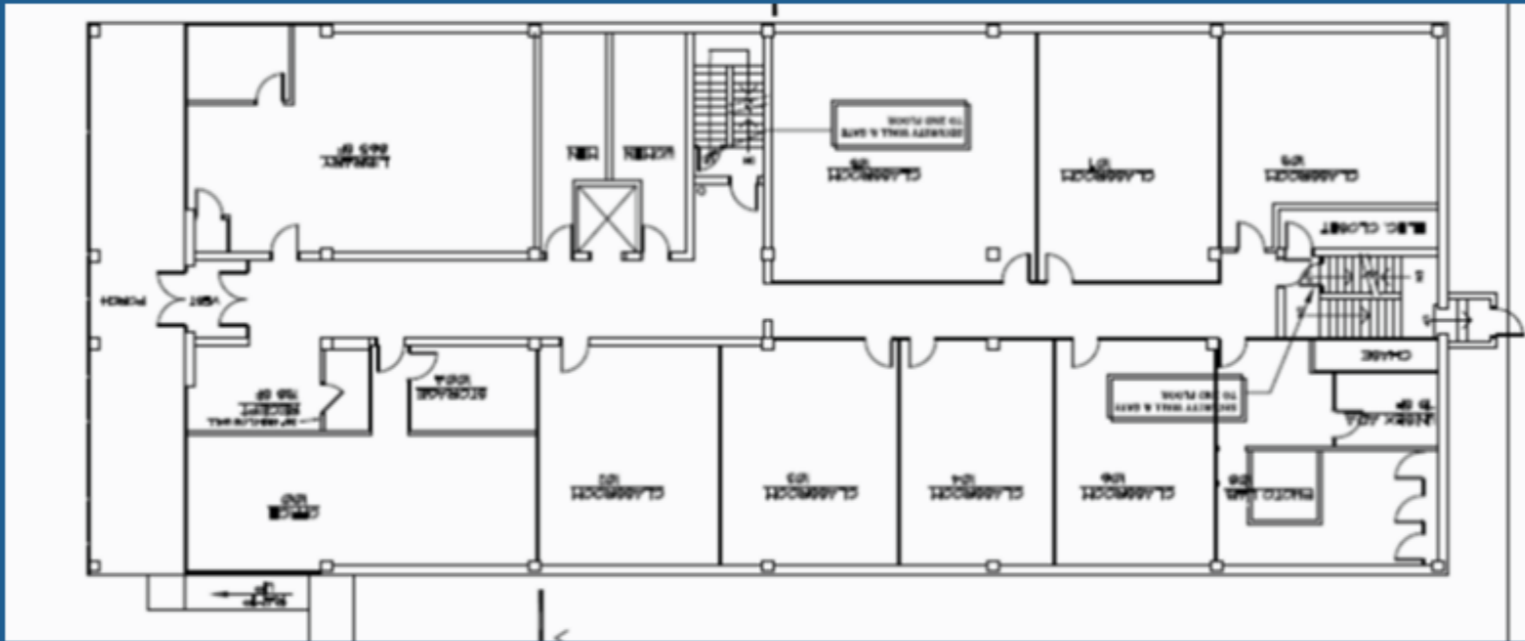
LEASE FACTS



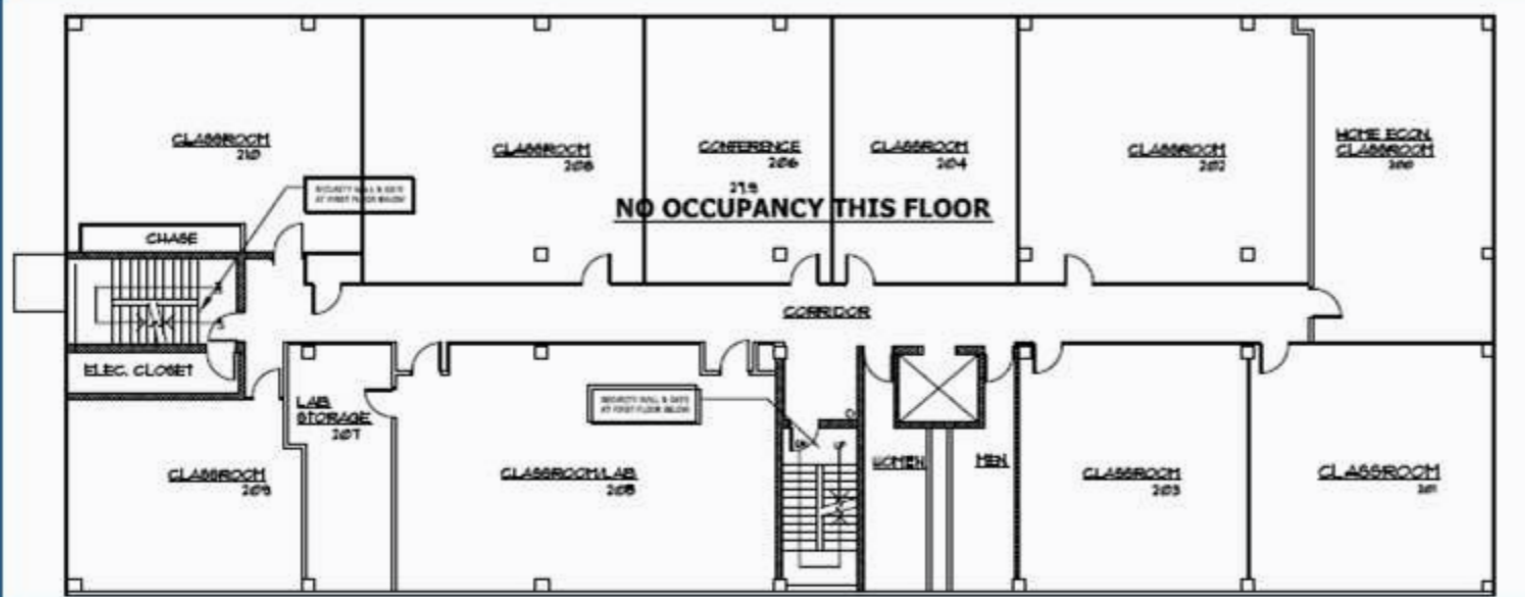
- ANNUAL RENT: /RSF: TBD
- TENANT IMPROVEMENT ALLOWANCE: TBD
- TERM: NEG
- SPACE: MEDICAL OFFICE AND OFFICE-REDEVELOPMENT
- PARKING 5/1000
- LEASE TYPE: FULL SERVICE
- LAND: 2 ACRES-PRIME PARKING AND REDEVELOPMENT



FLOOR PLAN: FIRST FLOOR



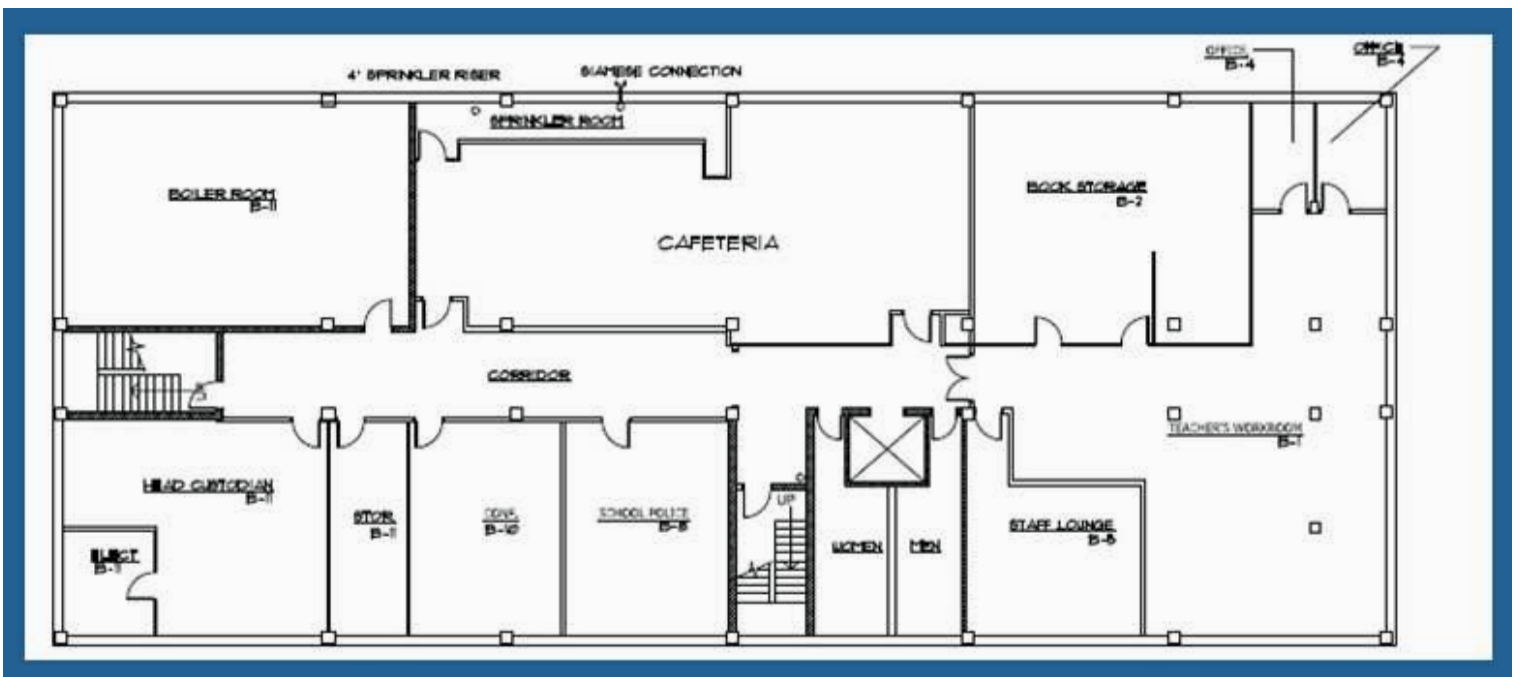
FLOOR PLAN: SECOND FLOOR



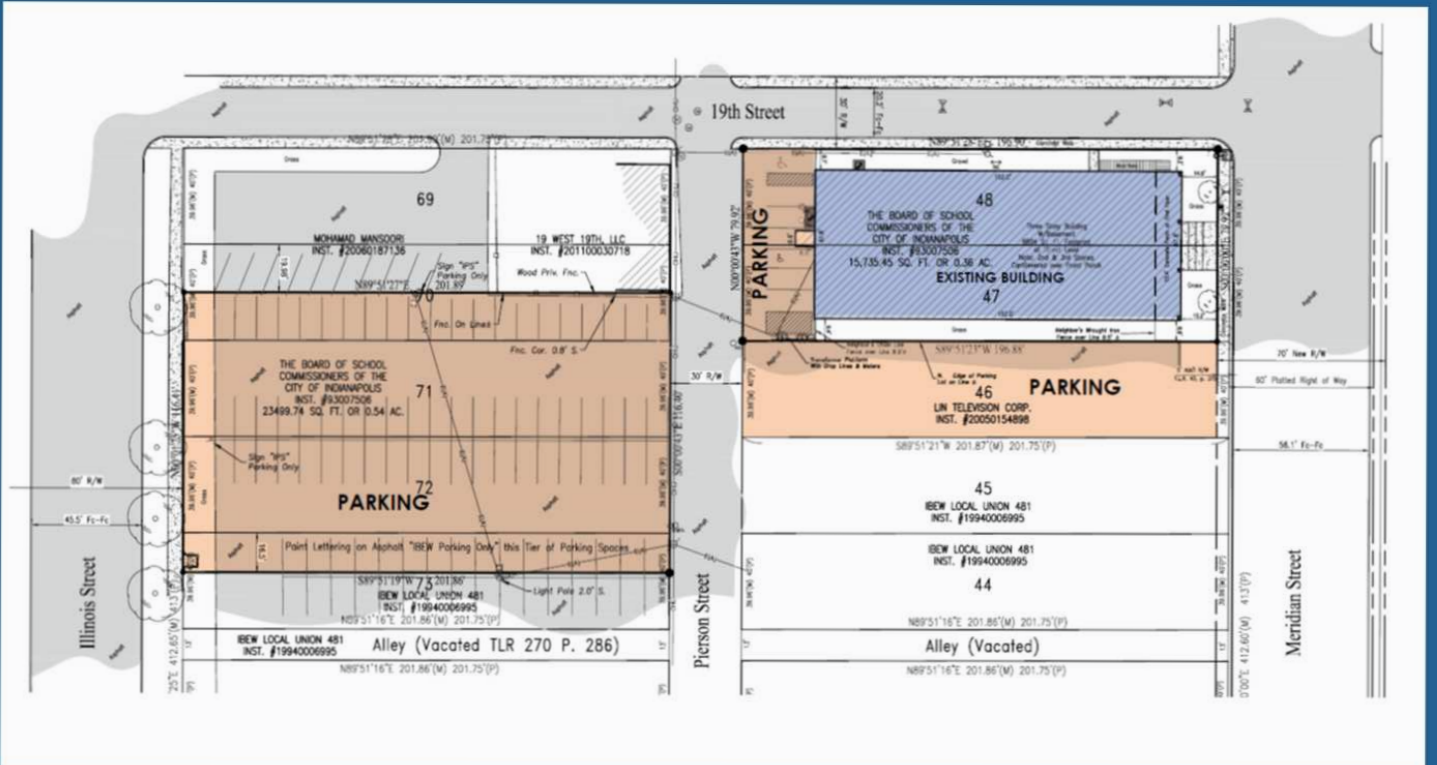
FLOOR PLAN: THIRD FLOOR



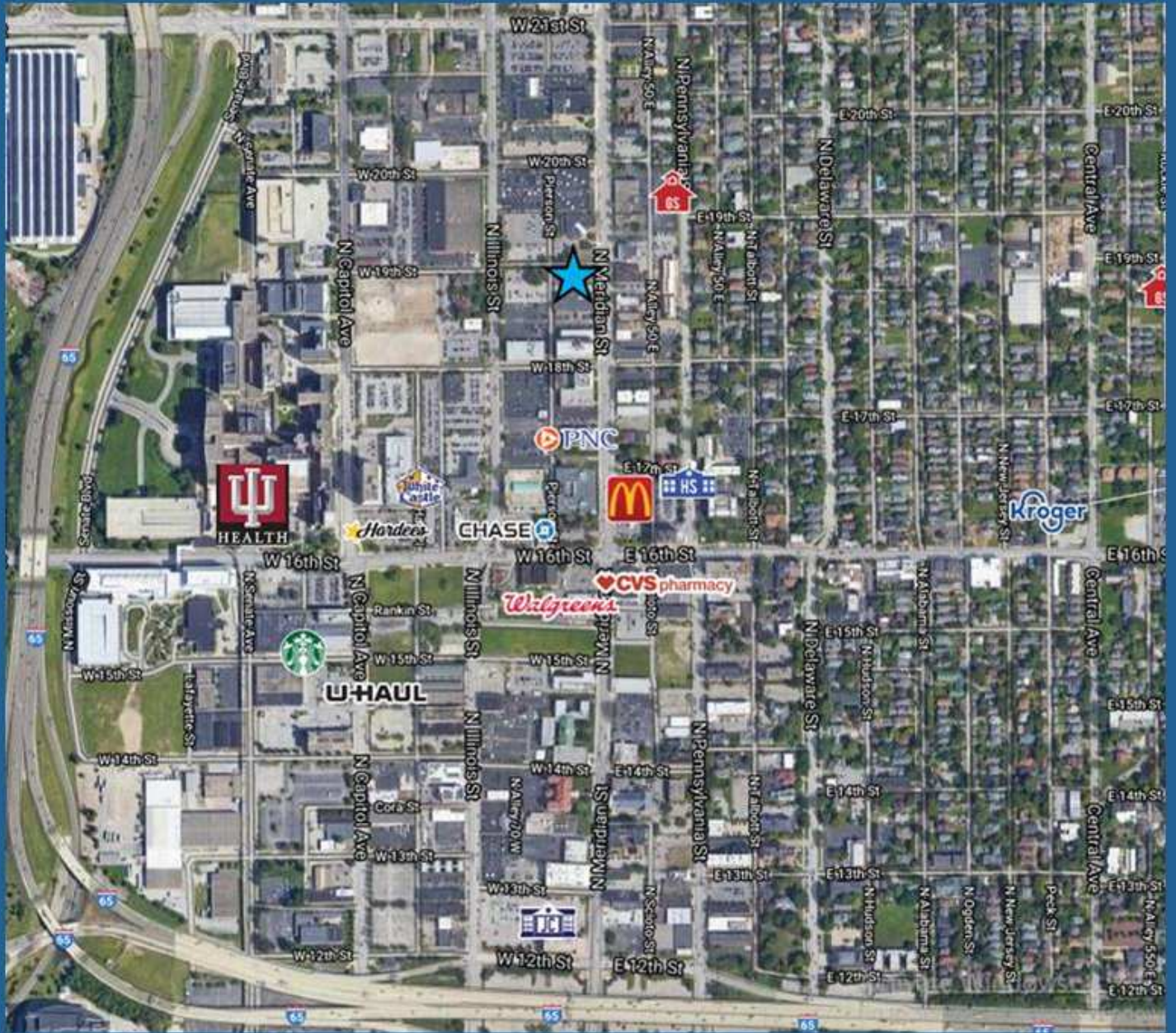
FLOOR PLAN: BASEMENT



SURVEY & SITE PLAN



ARIAL



POTENTIAL REDEVELOPMENT RENDERINGS





Innovcare is a healthcare real estate company that provides innovative solutions for healthcare companies needing expertise in real estate development, consulting, brokerage, property management, and many other fields. Innovcare achieves measurable outcomes with solutions that are quick, costefficient, and innovative. We are committed to changing the real estate landscape as hospital and physician needs evolve. We are focused on how healthcare reform changes the business dynamics of the healthcare real estate industry. We pride ourselves on reducing healthcare delivery cost associated with real estate assets.

Innovcare's team has developed, sold, and managed over \$1 billion in medical office assets.

Check us out at www.thinkinncare.com

tyson c. chastain | MHA | president | principal

o | 317.653.5626
c | 317.460.8771
e | tyson@thinkinnovcare.com
w | www.thinkinncare.com

jack westfall | vice president | principal

c | 312.752.5840
e | jack@thinkinnovcare.com
w | www.thinkinncare.com