



SHORE TERRACE MEDICAL CENTER



11,000 SQ/FT TENANT
32,000 SQ/FT BUILDING

TENANT/USE

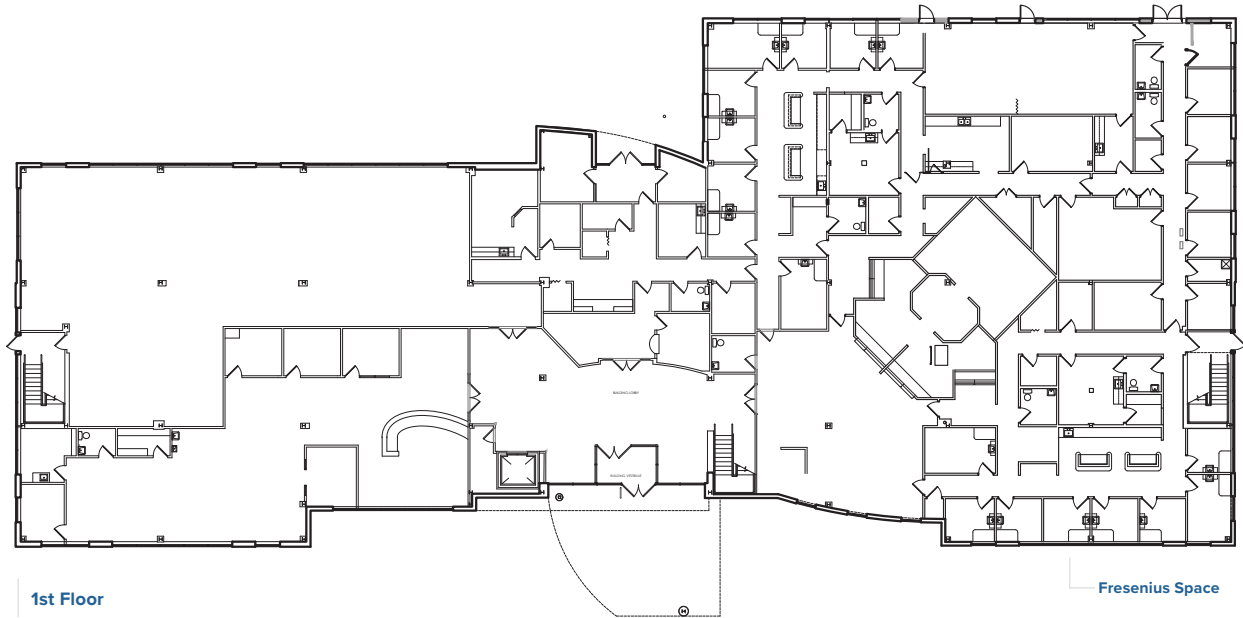
Fresenius Kidney Care at Shore Terrace Medical Center

DESCRIPTION OF SITUATION AND HOW IT RELATES TO HEALTHCARE

Innovcare | Innovative Healthcare Real Estate was the broker and construction manager for Fresenius Kidney Care project consisting of approximately 11,000 sf.

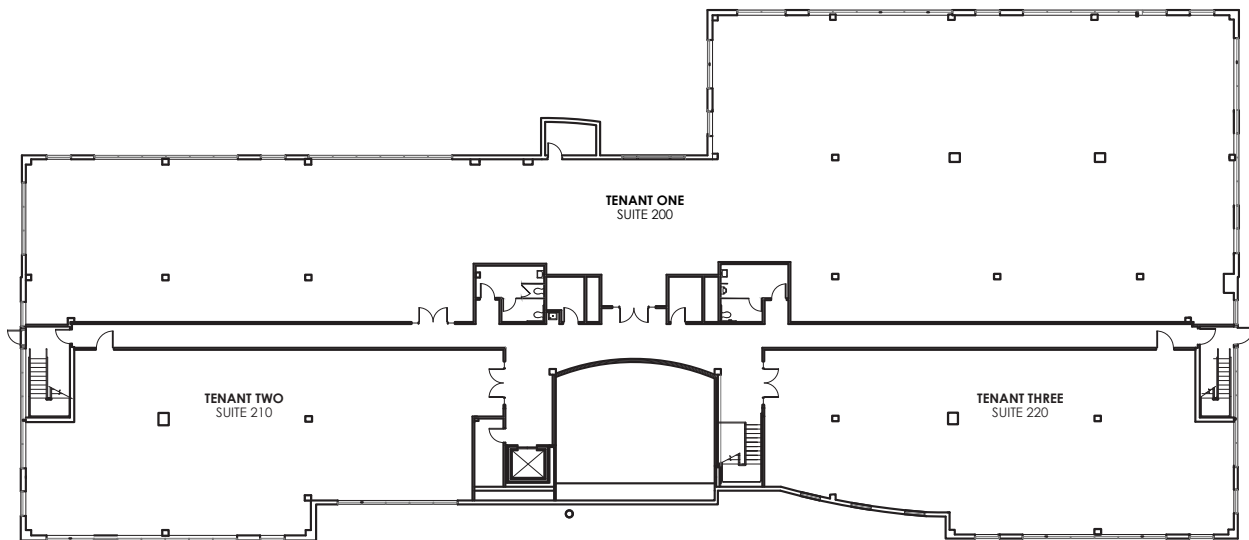
CHALLENGES PRESENTED AND OUR SOLUTIONS

In 2019, Fresenius trusted Innovcare to assist in the lease negotiation to occupy 25% of a long-time vacant property. This relationship led to an extensive and detailed tenant finish renovation taking several months to engineer, confirm compliance and build out. Because the building was not to code, this renovation required a higher level of attention and diligence to details.



1st Floor

Fresenius Space



2nd Floor

