



INNOVATIVE HEALTHCARE REAL ESTATE, A TWG AFFILIATE



Binford Medical Center

5518 E 65th St, Indianapolis, IN

PROPERTY SQUARE FEET: 46,532

RENTAL RATE: TBD - Neg

VACANT SQUARE FEET: 46,532

1st Floor: 27,866

2nd Floor: 18,666

CONTACT:



Tyson C. Chastain

317.653.5626 | tyson@thinkinnovcare.com

PROPERTY DESCRIPTION:

The Binford Medical Center is located on 65th and Binford Blvd. The Center and adjacent parcels are zoned medical. The existing Center consist of 2nd generation clinical office space and shell space. The Center is 100% vacant. The Center presents a great opportunity for a single medical tenant that needs additional land parcel for expansion.

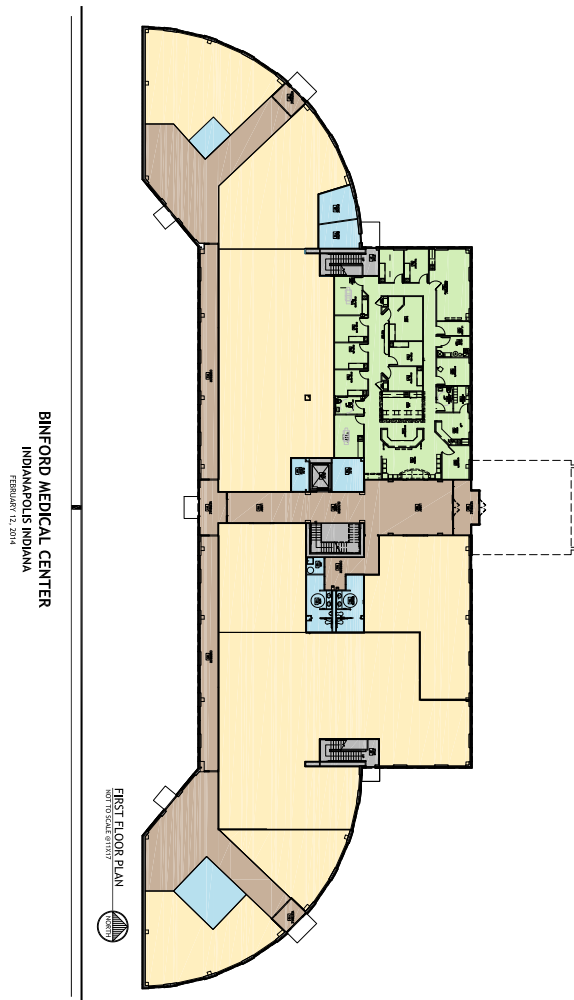




INNOVATIVE HEALTHCARE REAL ESTATE, A TWG AFFILIATE

1st Floor

RENTABLE SQUARE FEET: 27,866

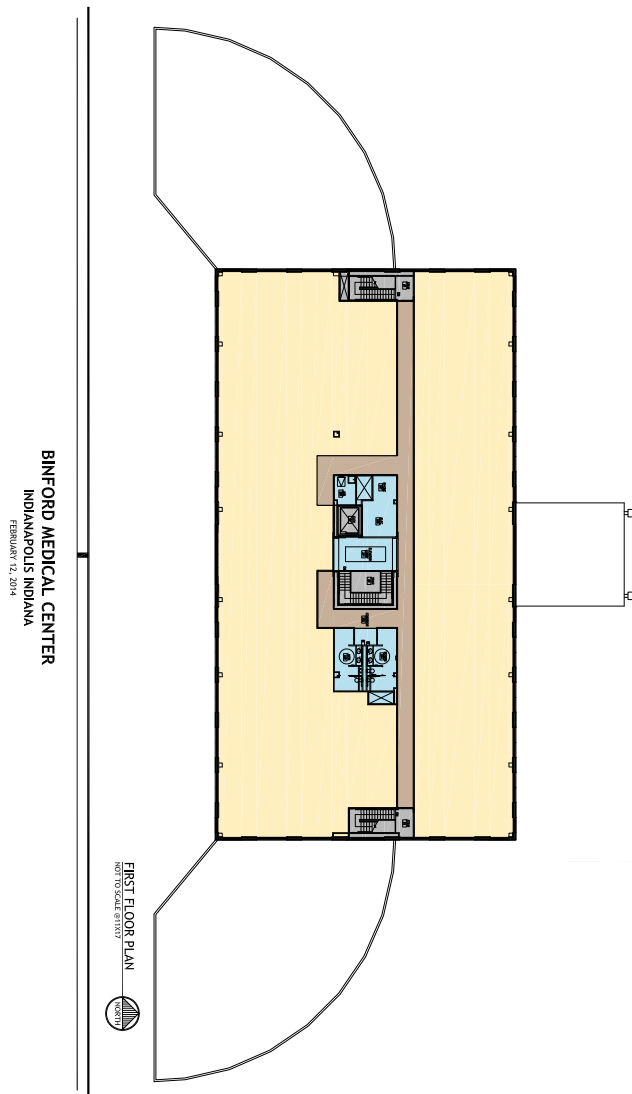




INNOVATIVE HEALTHCARE REAL ESTATE, A TWG AFFILIATE

2nd Floor

RENTABLE SQUARE FEET: 18,666





INNOVATIVE HEALTHCARE REAL ESTATE, A TWG AFFILIATE

Proposed Site Plan

