



INNOVATIVE HEALTHCARE REAL ESTATE, A TWG AFFILIATE



Medical Office Space

8615 U.S. 31 South | Indianapolis, IN 46227

PROPERTY SQUARE FEET: 6,550

RENTAL RATE: \$20.00 / RSF GROSS, FULL SERVICE

VACANT SQUARE FEET: 2,550 RSF

| Suite B: 2,550 SF

CONTACT:



Tyson C. Chastain

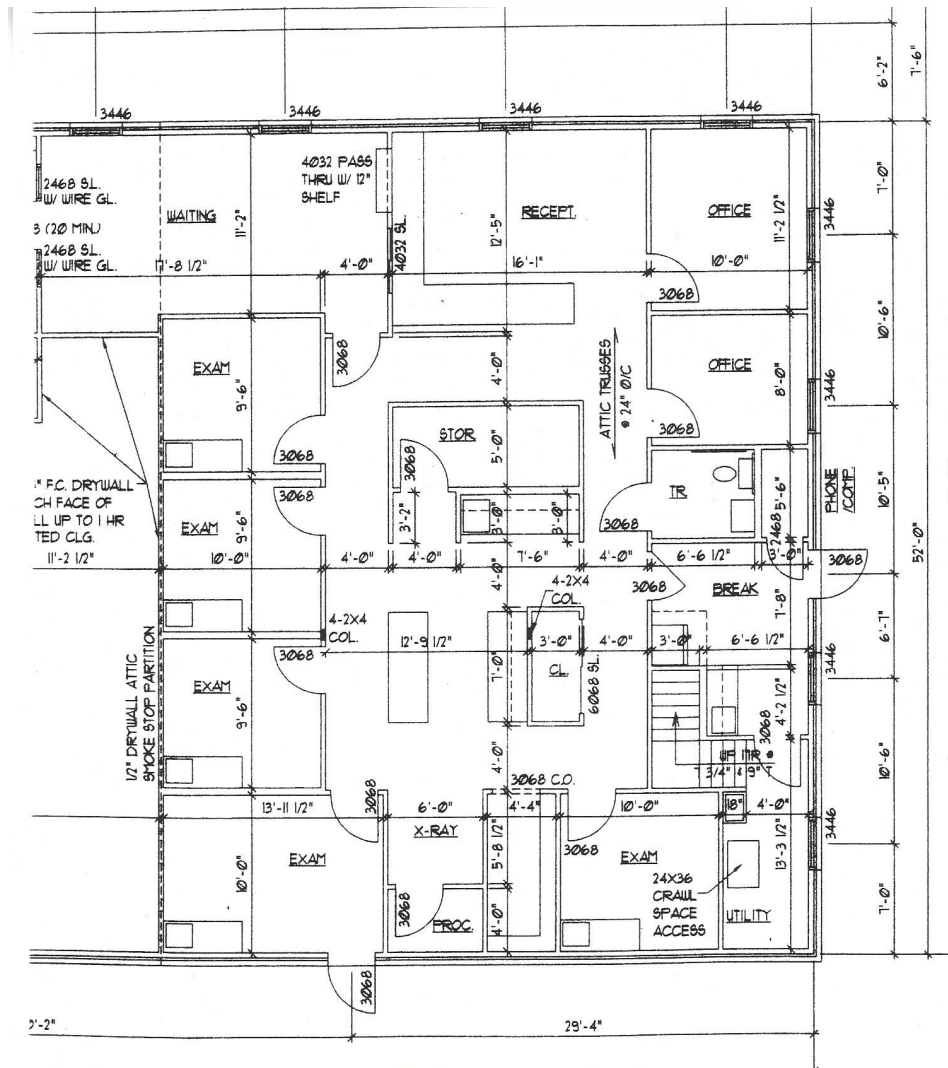
317.653.5626 | tyson@thinkinnovcare.com

PROPERTY DESCRIPTION:

The Property is a one-story medical office building with approximately 60% of the useable space occupied by Indiana Foot & Ankle, and the remaining 40% available for medical office use. The 2,550 SF available space is complete with CAT-5 cable and custom cabinetry included in the rental rate. The Property is in close proximity to St. Francis and Community South, and a 20-minute drive to downtown Indianapolis. The Greenwood Park Mall is directly south of the Property and three area high schools are within 5 miles or less of the site: Perry Meridian, Southport, and Roncalli.



Layout





INNOVATIVE HEALTHCARE REAL ESTATE, A TWG AFFILIATE

Aerial View

