



INNOVATIVE HEALTHCARE REAL ESTATE, A TWG AFFILIATE



Summerlin MOB

3351 N. Meridian St., Indianapolis, IN

PROPERTY SQUARE FEET: 10,000

RENTAL RATE: \$18.00-\$20.00 / RSF Full Service

VACANT SQUARE FEET: 10,000 RSF

Suite 100: 1,000-5,000 RSF (1st Floor)

Suite 200: 1,000-5,000 RSF (2nd Floor)

CONTACT:



Tyson C. Chastain

317.653.5626 | tyson@thinkinnovcare.com

PROPERTY DESCRIPTION:

The Property is a two-story medical office building. The Property is located on the hard corner of 34th Street and Meridian St. The Property is for sale or lease. Over the years, multiple medical tenants have leased the Property. Many properties in the immediate area have been redeveloped including the Winona Hospital site, etc.



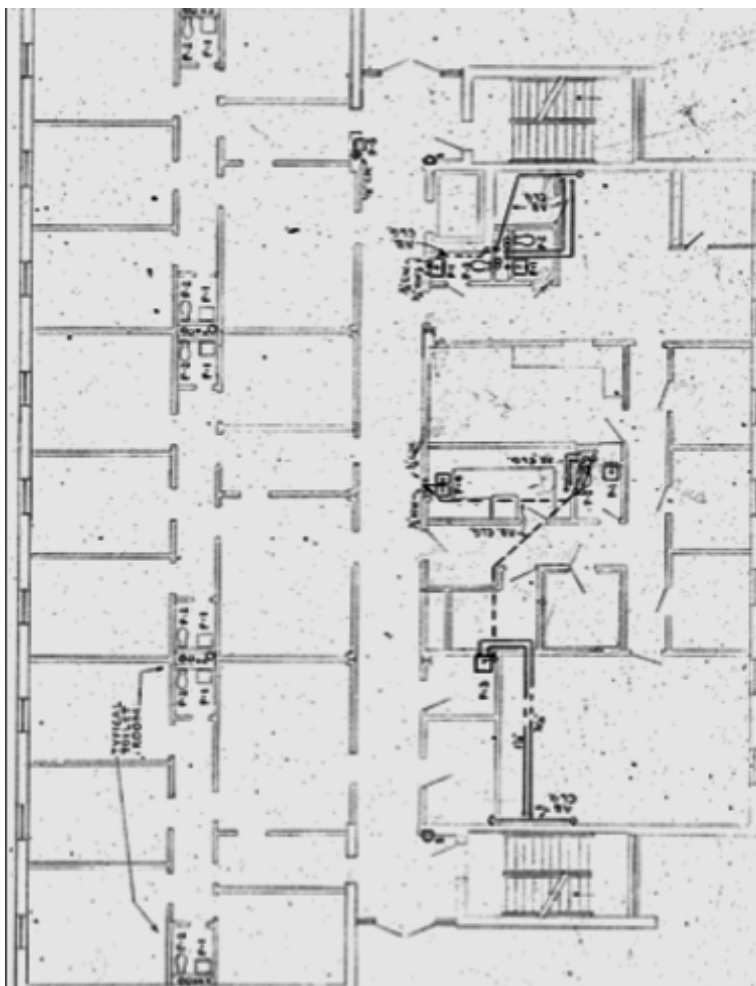


INNOVATIVE HEALTHCARE REAL ESTATE, A TWG AFFILIATE

Suite 100

RENTABLE SQUARE FEET: 5,000 (entire floor)

CONDITION OF SUITE: 2nd Generation Office Space



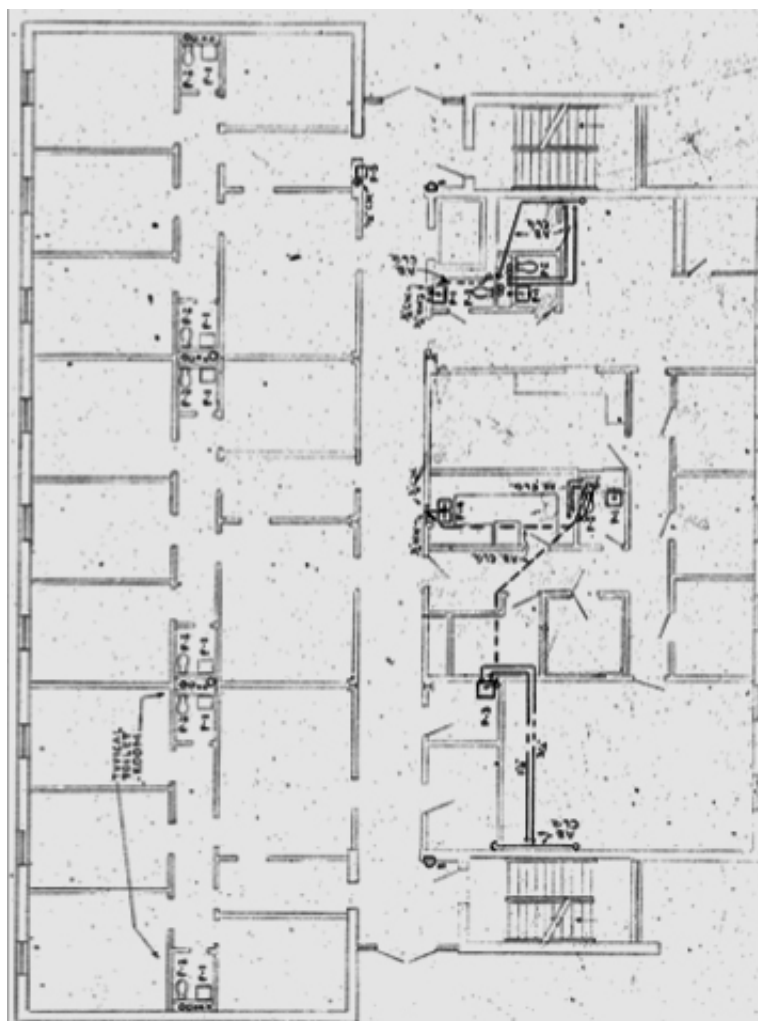


INNOVATIVE HEALTHCARE REAL ESTATE, A TWG AFFILIATE

Suite 200

RENTABLE SQUARE FEET: 5,000

CONDITION OF SUITE: 2nd Generation Office Space





INNOVATIVE HEALTHCARE REAL ESTATE, A TWG AFFILIATE

Proposed New Development Site Plan



Aerial Plan

